



INSPIRE introduction

Prof. Vlado Cetl, PhD



**GEOSPATIAL
WORLD
FORUM**

25-29 MAY 2015
LISBON CONGRESS CENTER, PORTUGAL



An INfrastructure for SPatial INformation in the EU - INSPIRE

does it

Serve society ?

Stimulate innovation ?

Support legislation ?

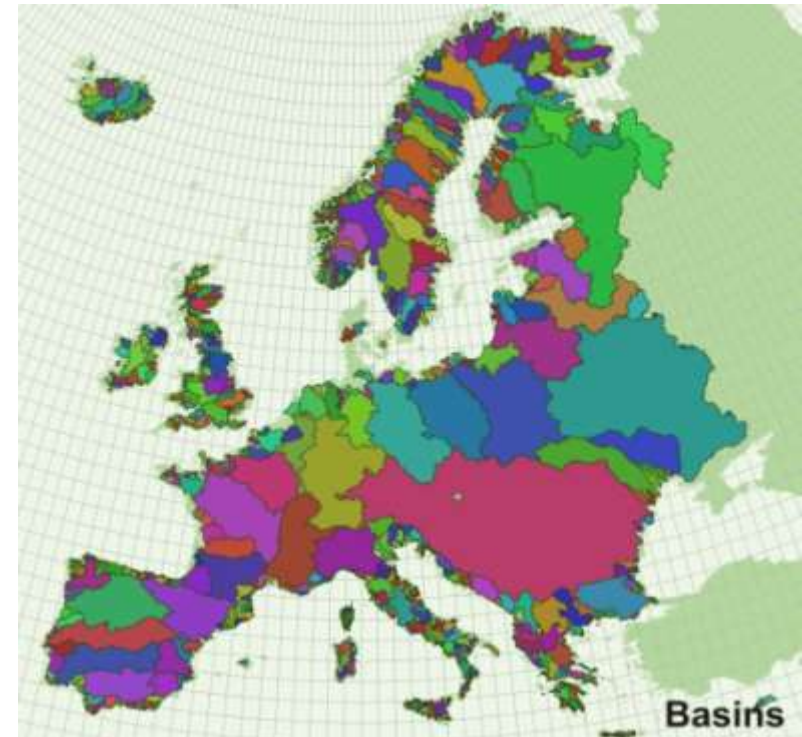
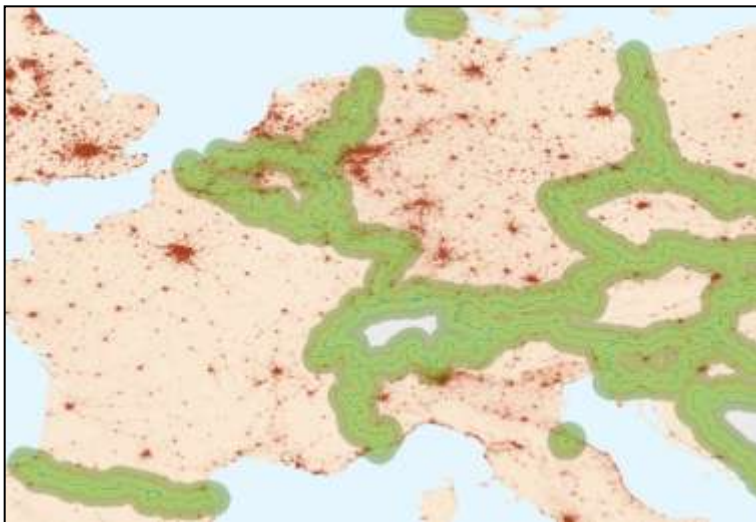
Outline

- INSPIRE Directive
- INSPIRE Principles
- INSPIRE Components
- INSPIRE Roadmap
- INSPIRE Geoportal
- INSPIRE Maintenance and Implementation Framework



Why Europe needs a spatial data infrastructure (SDI)?

- Natural Disasters and as well as other environmental phenomena do not stop at national borders!
- 20% of the EU citizens (115 million) live within 50 Km from a border



- 70% of all fresh water bodies in Europe are part of a trans-boundary river basin !!



Data easily discoverable and accessible to users



Facilitating development of new applications and services

Like a road infrastructure makes it possible to connect different sites, a spatial data infrastructure makes it possible to connect data located at different sources

Components

Institutional framework	Technical standards
Fundamental data sets	Data Services



1. Data policy restrictions

- pricing, copyright, access rights, licensing policy

2. Lack of co-ordination

- across borders and between levels of government

3. Lack of standards

- incompatible information and information systems

4. Existing data not re-usable

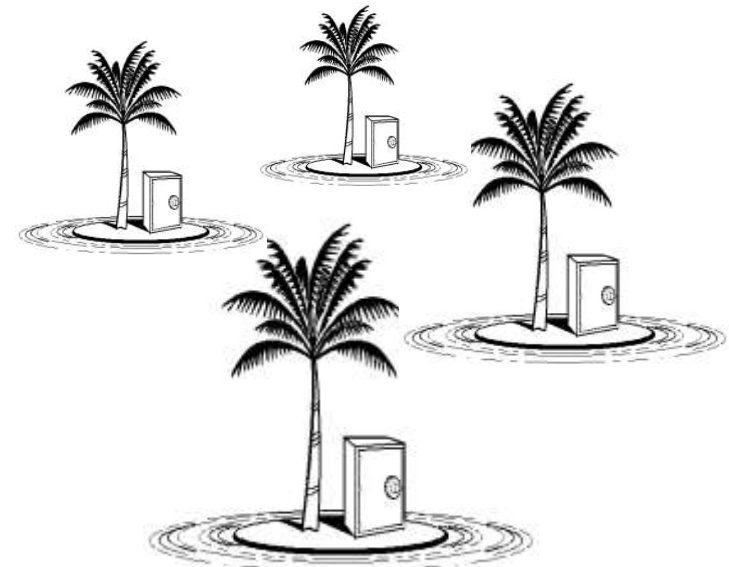
- fragmentation of information, redundancy, inability to integrate

5. Missing data

6. Data quality

- Not comparable, not timely available, ...

EU has islands of information & data of different standards and quality...



**NOT
INSPIRE**



INSPIRE data themes

Annex I

1. Coordinate reference systems
2. Geographical grid systems
3. Geographical names
4. Administrative units
5. Addresses
6. Cadastral parcels
7. Transport networks
8. Hydrography
9. Protected sites

Annex II

1. Elevation
2. Land cover
3. Ortho-imagery
4. Geology

Annex III

1. Statistical units
2. Buildings
3. Soil
4. Land use
5. Human health and safety
6. Utility and governmental services
7. Environmental monitoring facilities
8. Production and industrial facilities
9. Agricultural and aquaculture facilities
10. Population distribution – demography
11. Area management/ restriction/regulation zones & reporting units
12. Natural risk zones
13. Atmospheric conditions
14. Meteorological geographical features
15. Oceanographic geographical features
16. Sea regions
17. Bio-geographical regions
18. Habitats and biotopes
19. Species distribution
20. Energy Resources
21. Mineral resources





INSPIRE Directive

- The INSPIRE directive came into force on 15 May 2007 and will be implemented in various stages, with full implementation required by 2020
- The INSPIRE directive aims to create a European Union (EU) SDI. This will enable the sharing of environmental spatial information among public sector organisations and better facilitate public access to spatial information across Europe
- A European SDI will assist in policy-making across boundaries. Therefore the spatial information considered under the directive is extensive and includes a great variety of topical and technical themes





INSPIRE Directive

General rules to establish an **Infrastructure for Spatial Information in Europe** for

- Community **environmental policies** and policies or activities with the impact on the environment

INSPIRE is built on the **NSDI**s established and operated by the **Member States**

Spatial data held by/on behalf of **public authorities**

Does **not** require **collection of new data**

INSPIRE is a **Framework Directive**

- Detailed technical provisions in Implementing Rules





INSPIRE Principles

- Data should be collected only once and kept where it can be maintained most effectively
- It should be possible to combine seamless spatial information from different sources across Europe and share it with many users and applications
- It should be possible for information collected at one level/scale to be shared with all levels/scales; detailed for thorough investigations, general for strategic purposes
- Geoinformation needed for good governance at all levels should be readily and transparently available
- Easy to find what geoinformation is available, how it can be used to meet a particular need, and under which conditions it can be acquired and used





A collaborative effort

- Transparency and inclusiveness
- Stakeholder consultations
- Support to Member States on the implementation
- Extend INSPIRE to and ensure consistency of different policy domains
- Promote INSPIRE in international standardisation



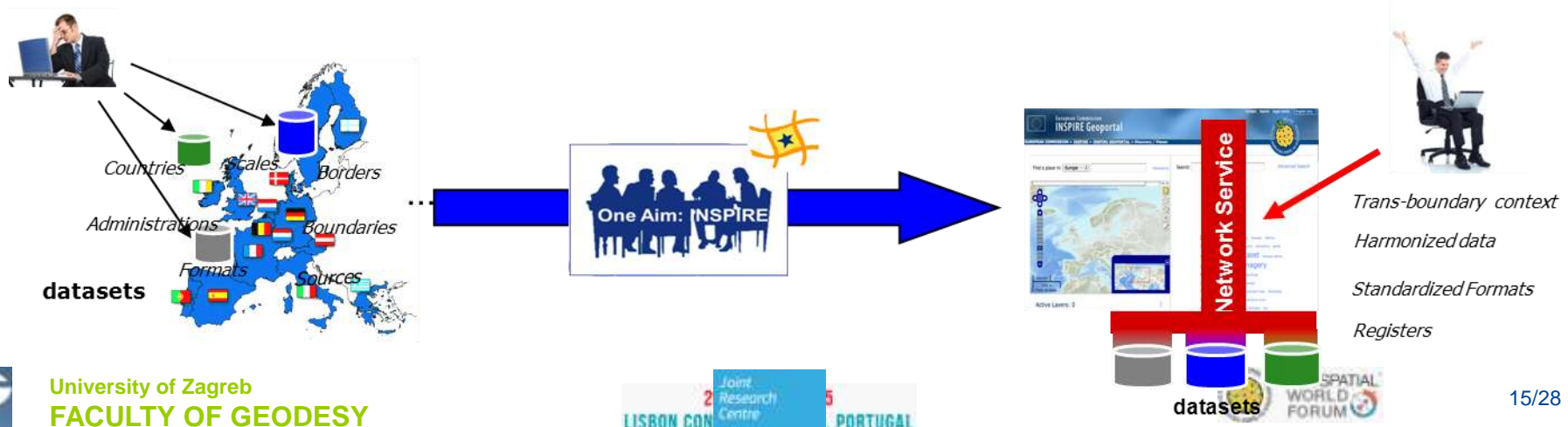


INSPIRE Directive & Implementing Rules

- The INSPIRE Directive lays down general rules to establish an Infrastructure for Spatial Information in Europe for the purposes of Community environmental policies and policies or activities which may have an impact on the environment
- Implementing Rules (IR, legal acts)
 - Metadata
 - Interoperability of spatial data sets and services
 - Services (discovery, view, download, transform, invoke)
 - Data and Service sharing (policy)
 - Monitoring & reporting

INSPIRE in a nutshell

- Comprehensive **data inventory** (Monitoring & Reporting IR)
- **Facilitate data discovery** through standardised discovery services & metadata (IR on Network Services & Metadata)
- **Data sharing** (IR on Data and Service Sharing)
- **Facilitate data access** by allowing standardised view, download and transformation (IR on Network Services)
- **Facilitate data use and interoperability** by adopting common cross-domain models to exchange data (IR on Data Interoperability)





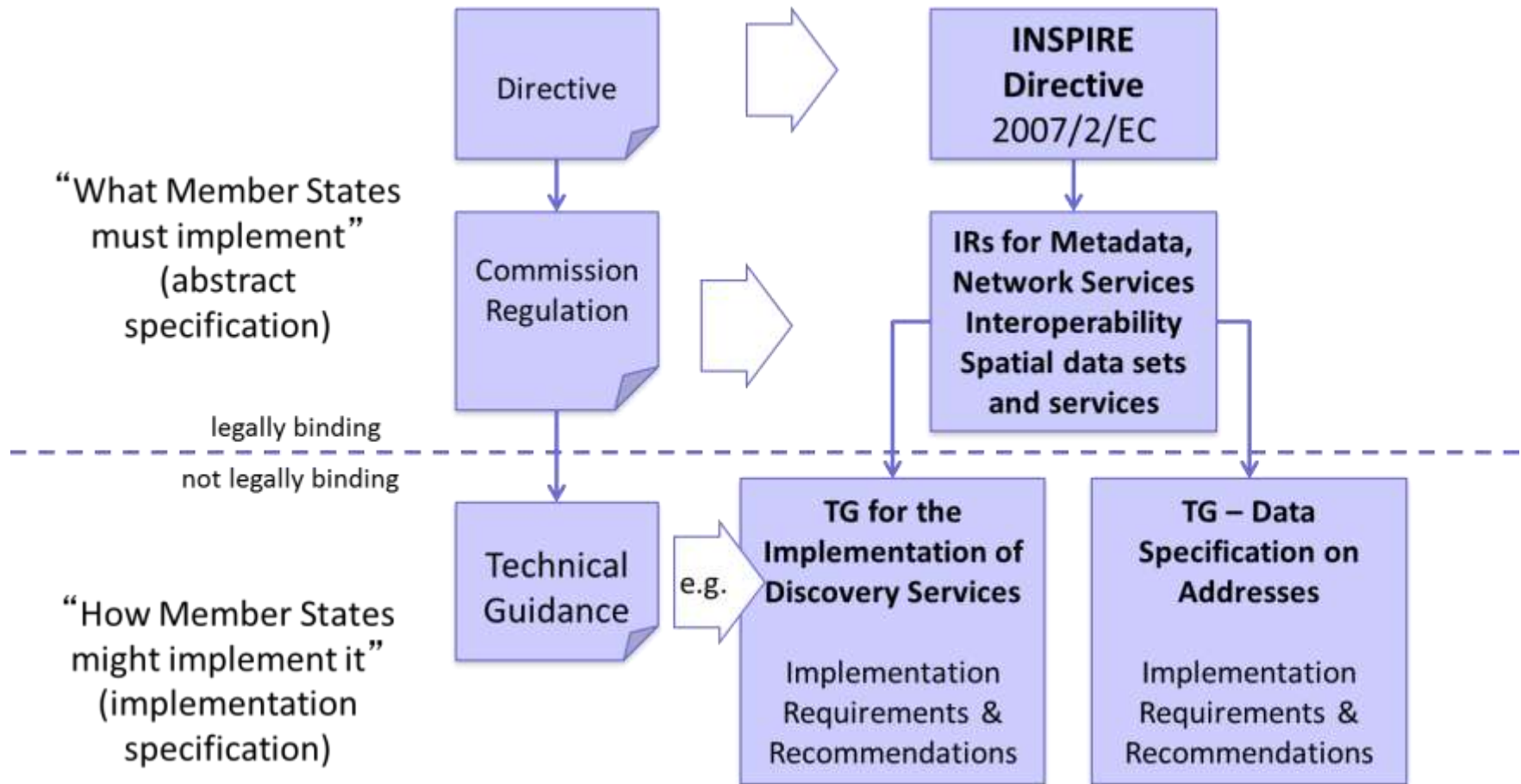
INSPIRE Legal Acts published in the Official Journal of the EU

- **Directive** 2007/2/EC (INSPIRE) 14.03.2007
- INSPIRE **Metadata** Regulation 03.12.2008 (corrigendum 15.12.2009)
- Commission Decision regarding INSPIRE **monitoring and reporting** 05.06.2009
- Regulation on INSPIRE Network Services 19.10.2009 (**View and discovery**)
- Regulation on INSPIRE **Data and Service Sharing** 29.03.2010
- Commission Regulation amending Regulation (EC) No 976/2009 as regards **download services and transformation services** 10.12.2010
- Commission Regulation implementing Directive 2007/2/EC of the European Parliament and of the Council as regards **interoperability of spatial data sets and services** 10.12.2010 (Annex I)
- Commission Regulation amending Regulation 1089/2010 as regards interoperability of spatial data sets and services 05.02.2011 (**code list**)
- **Annex II+III** amendment to Regulation on the interoperability of spatial data sets and services 10.12.2013.
- ...

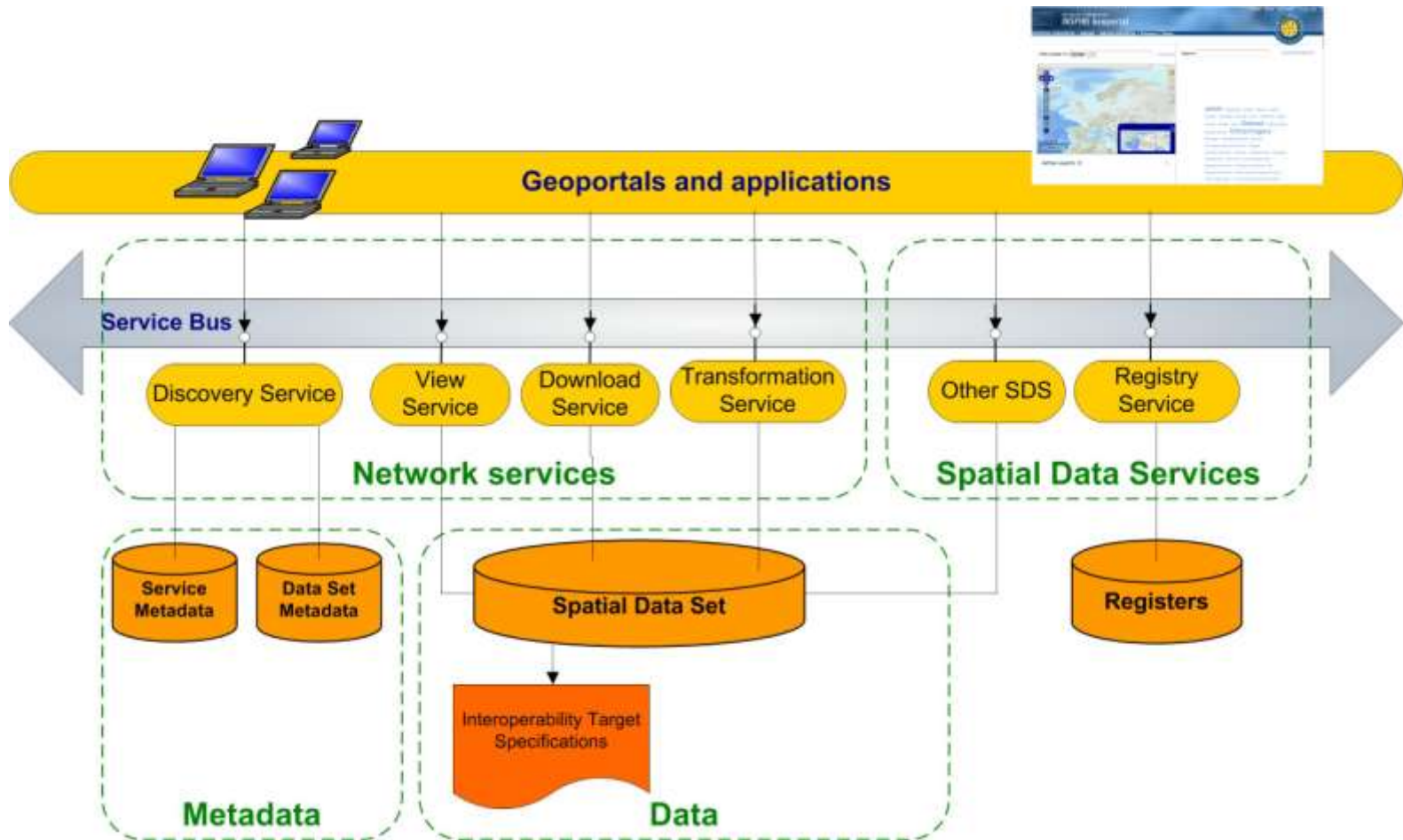
European law affecting 30+ countries, 24+ languages



INSPIRE IRs vs. TG

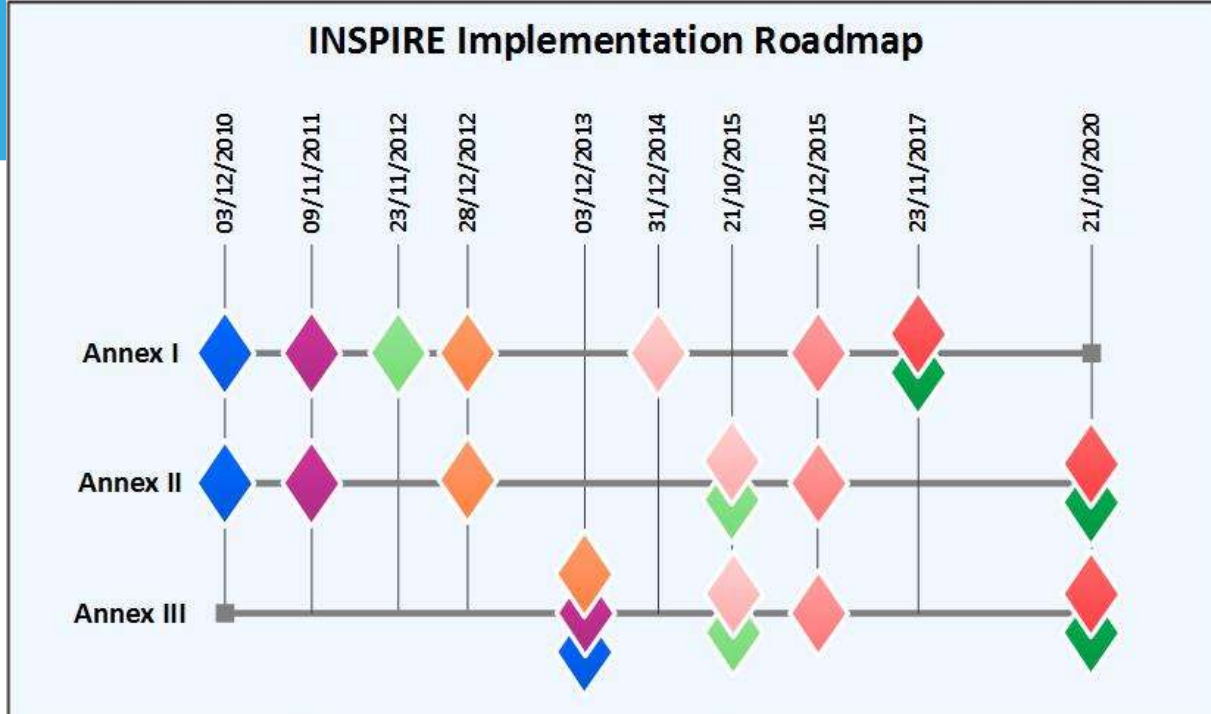


INSPIRE components





Implementation Roadmap



<p>Discovery metadata shall be available for spatial data sets and services</p>	<p>Spatial data sets shall be available for discovery and view from the INSPIRE geo-portal (data does not yet need to be conformant to IR-ISDSS)</p>	<p>Spatial data sets shall be available for download and transformation (whenever applicable¹) from the INSPIRE geo-portal (data does not yet need to be conformant to IR-ISDSS²)</p>
<p>Newly collected and extensively restructured spatial data sets shall be conformant to IR-ISDSS (incl. metadata for interoperability) and available through network services</p>	<p>All spatial data sets shall be conformant to IR-ISDSS (incl. metadata for interoperability) and available through network services</p>	
<p>Invocable spatial data services related to newly collected and extensively restructured spatial data sets shall be conformant to Annexes V, VI and (where practicable) VII of IR-ISDSS (incl. metadata)</p>	<p>All invocable spatial data services shall be conformant to Annex V of IR-ISDSS (incl. metadata)</p>	<p>All invocable spatial data services shall be conformant to Annexes VI and (where practicable) VII of IR-ISDSS (incl. metadata)</p>

IR-ISDSS = Implementing Rules on interoperability of spatial data sets and services (Commission Regulation (EU) No. 1089/2010), including its amendments Regulations (EU) No. 102/2011, 1253/2013 and 1312/2014

¹ Transformation Services only need to be provided if data sets are not made conformant with the IR-ISDSS by some other means (see Art. 7(3) of the INSPIRE Directive)

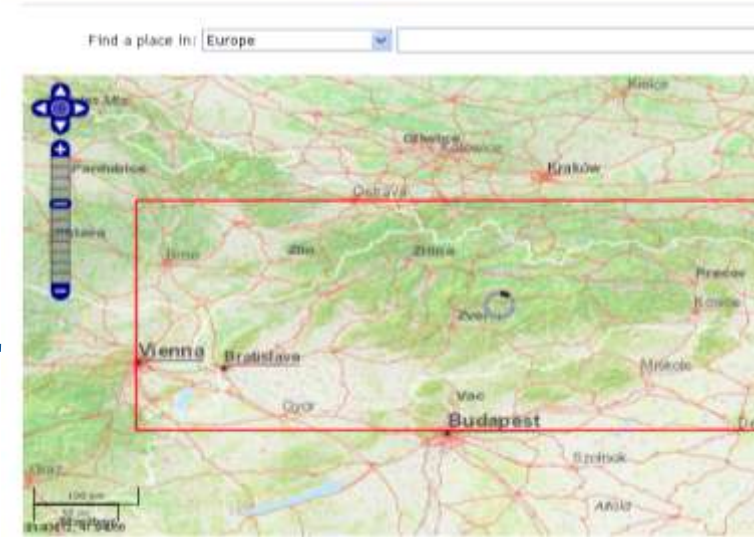
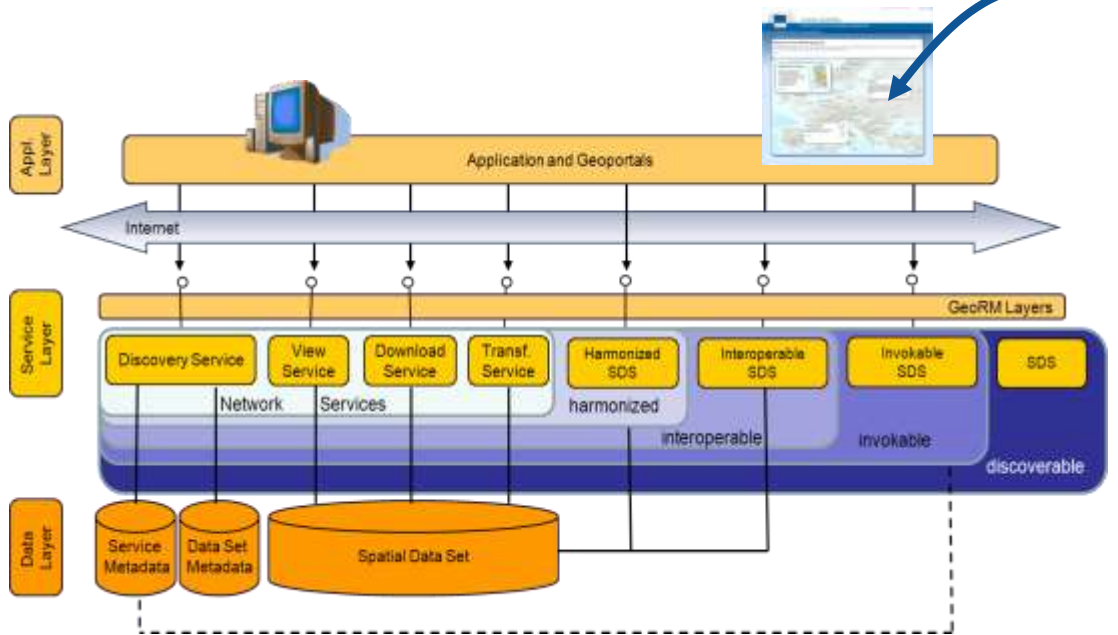
² With the exception of newly collected and extensively restructured Annex I data sets, which already have to be compliant with the IR-ISDSS by 23/11/2012



INSPIRE Geoportal

Central access point to the INSPIRE infrastructure and resources (operated by the EC)

→ “The face” of INSPIRE



- Connection to all MS network services
- cross-border data discovery and visualisation
- support to European policy making

Status of our INSPIRE building site ?



INSPIRE implementation status

- The legal framework has been established
- Development of NSDIIs across EU according to provisions of the Directive
- Many components and services of infrastructure are already in place
- Implementation of INSPIRE is entering a new phase (**focus is now on MS**)
- Main obstacles: data sharing, coordination, lack of capacity
- MIF = Maintenance and implementation framework



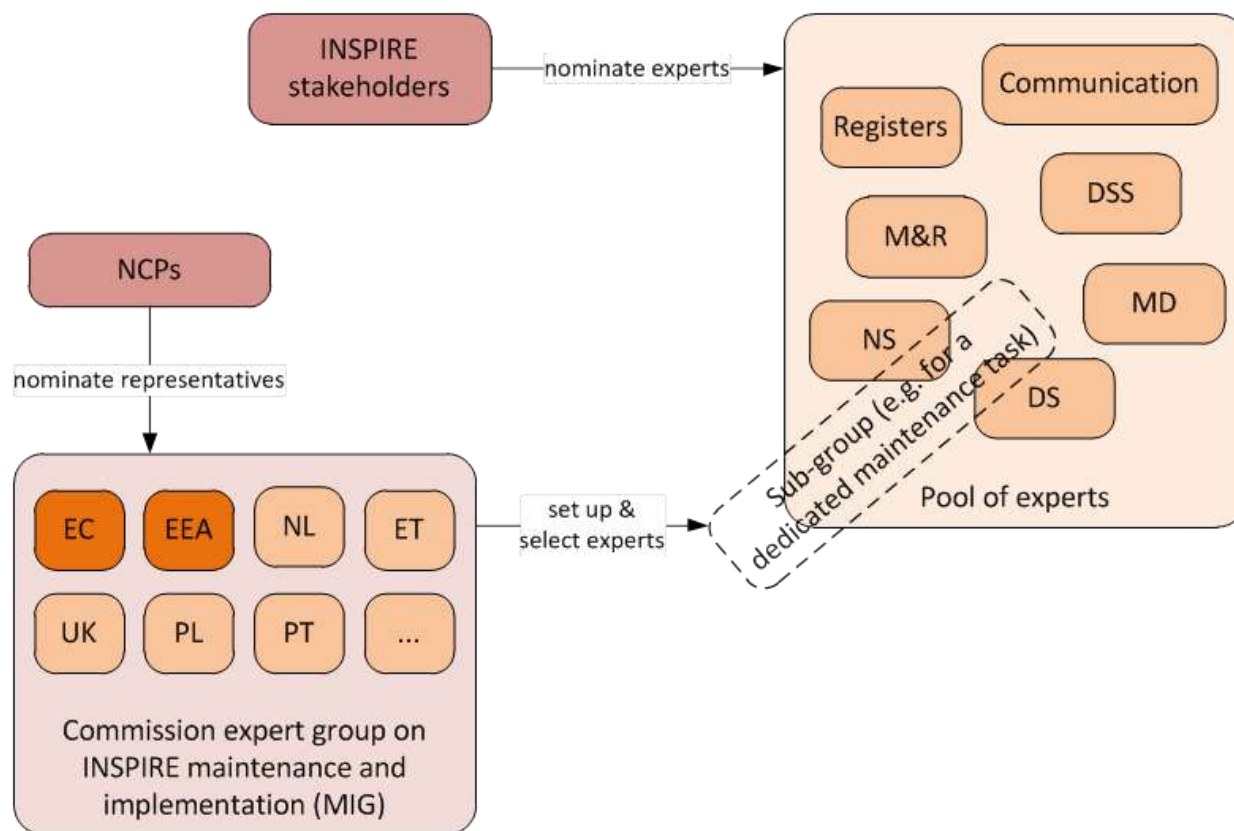


Maintenance and Implementation

- Support to the implementation of the IRs, e.g.
 - Answering questions around INSPIRE implementation
 - Facilitating the discussion of issues and exchange of experiences between INSPIRE experts in existing groups
 - Implementation/hosting of central infrastructure components
 - Capacity building, development of training material etc.
 - Support to eReporting
- Corrective maintenance to IRs, e.g.
 - Corrigenda to the MD Regulation and M&R Decision
 - Corrections and bug fixes in TG documents or schemas
- Evolutive maintenance of the IRs, e.g.
 - Taking into account requirements emerging from environmental legislation or developments in technology / standardisation



Setting up the INSPIRE MIF





Summary

- INSPIRE provides a comprehensive framework for interoperability of spatial data
- Methods and infrastructure components can be re-used for data interoperability in other sectors
- Cross-sector & cross-border spatial analysis
- INSPIRE is a process
- Results and benefits
- Data harmonisation have just been started!
- Challenges ...
- Establishment of INSPIRE MIF
- Evolution of INSPIRE (Powered by INSPIRE)





<http://inspire.ec.europa.eu/>

CONTACT | LEGAL NOTICE | PRIVACY STATEMENT | English (en)

INSPIRE
Infrastructure for Spatial Information in the European Community

European Commission > INSPIRE >

About
Home
About INSPIRE
Legislation
History
Who's who in INSPIRE
INSPIRE Library
INSPIRE Conferences

Implementation
Roadmap
Monitoring and Reporting
SOC
INSPIRE GeoPortal
Maintenance and Implementation

Adoption
Roadmap
Implementing Rules
Monitoring and Reporting
Metadata
Data Specifications
Network Services
Spatial Data Services
Data and Service Sharing

Stakeholder Participation
Stakeholder Participation
List of registered Organisations
Consultations
Register your Interest

News and Events

INSPIRE DIRECTIVE

In Europe a major recent development has been the entering in force of the INSPIRE Directive in May 2007, establishing an infrastructure for spatial information in Europe to support Community environmental policies, and policies or activities which may have an impact on the environment.

INSPIRE is based on the infrastructures for spatial information established and operated by the 28 Member States of the European Union. The Directive addresses 54 spatial data themes needed for environmental applications, with key components specified through technical implementing rules. This makes INSPIRE a unique example of a legislative "regional" approach.

Legislation

Directive 2007/2/EC of the European Parliament and of the Council of 14 March 2007 establishing an Infrastructure for Spatial Information in the European Community (INSPIRE) was published in the official Journal on the 28th April 2007. The INSPIRE Directive entered into force on the 16th May 2007.

To ensure that the spatial data infrastructures of the Member States are compatible and usable in a Community and transboundary context, the Directive requires that common Implementing Rules (IRs) are adopted in a number of specific areas (Metadata, Data Specifications, Network Services, Data and Service Sharing and Monitoring and Reporting). These IRs are adopted as Commission Decisions or Regulations, and are binding in their entirety. The Commission is assisted in the process of adopting such rules by a regulatory committee composed of representatives of the Member States and chaired by a representative of the Commission (this is known as the Coriolis procedure).

- Directive 2007/2/EC of the European Parliament and of the Council of 14 March 2007 establishing an Infrastructure for Spatial Information in the European Community (INSPIRE) 14.03.2007
- INSPIRE Metadata Regulation 03.12.2008
- Commission Decision regarding INSPIRE monitoring and reporting 05.06.2009
- Commission Regulation (EC) No 976/2009 of 19 October 2009 implementing Directive 2007/2/EC of the European Parliament and of the Council as regards the Network Services 19.10.2009
- Compendium to INSPIRE Metadata Regulation 15.12.2009
- Regulation on INSPIRE Data and Service Sharing 29.03.2010
- COMMISSION REGULATION (EU) No 1089/2010 of 23 November 2010 implementing Directive 2007/2/EC of the European Parliament and of the Council as regards interoperability of spatial data sets and services 08.12.2010
- Commission Regulation (EU) No 1089/2010 as regards interoperability of spatial data sets and services 08.12.2010
- Commission Regulation amending Regulation (EC) No 976/2009 as regards download services and information service 08.12.2010
- COMMISSION REGULATION (EU) No 1012/2011 of 4 February 2011 amending Regulation (EU) No 1089/2010 implementing Directive 2007/2/EC of the European Parliament and of the Council as regards interoperability of spatial data sets and services 05.02.2011
- COMMISSION REGULATION (EU) No 1253/2013 of 21 October 2013 amending Regulation (EU) No 1089/2010 implementing Directive 2007/2/EC as regards interoperability of spatial data sets and services 10.12.2013
- Commission Regulation (EU) No 1311/2014 of 10 December 2014 amending Regulation (EC) No 976/2009 as regards the definition of an INSPIRE metadata element 11.12.2014
- Commission Regulation (EU) No 1311/2014 of 10 December 2014 amending Regulation (EC) No 976/2009 as regards the definition of an INSPIRE metadata element 11.12.2014
- Commission Regulation (EU) No 1312/2014 of 10 December 2014 amending Regulation (EU) No 1089/2010 implementing Directive 2007/2/EC of the European Parliament and of the Council as regards interoperability of spatial data services 11.12.2014
- Commission Regulation (EU) No 1312/2014 of 10 December 2014 amending Regulation (EU) No 1089/2010 implementing Directive 2007/2/EC of the European Parliament and of the Council as regards interoperability of spatial data services 11.12.2014

SEARCH INSPIRE

INSPIRE Community
INSPIRE Metadata

LOGIN / REGISTRATION

GEOSPATIAL WORLD FORUM
25 - 29 MAY 2015, LISBON, PORTUGAL

5 11 47
days hours minutes
Time left until the INSPIRE GW 2015 Conference

INSPIRE
IN YOUR COUNTRY

Year 2011-2014
SEARCH FOR PAST INSPIRE CONFERENCE PRESENTATIONS



'SHARING IS EVERYTHING'



Source: Clare Hadley, INSPIRE Conference, 2010

